



PROVIDENCE
PERFORMING
ARTS CENTER

Social Narrative **For the *Sensory-Friendly Performance of***


BILL BLAGG
FAMILY MAGIC



Saturday, March 16th @ 2:00 PM

***Thank you to our partners at The Autism Project**





I am going to see

FAMILY MAGIC featuring BILL BLAGG

at the

Providence Performing Arts Center



When I arrive at the theatre, there might be a lot of people there to see the performance. I may have to wait in line. This is okay, I can stay with my group as we enter the building.



When I get to Providence Performing Arts Center, I will walk through the metal detectors where there are security guards. They keep everyone safe.



This is inside the theater. I will sit here.



When it is time for the show to begin, the lights are turned down and everyone in the theatre becomes quiet.



Going to a live performance is like watching a movie or TV except the people, or performers, are real and in front of us, live on a big stage.



Join us for an afternoon filled with laughter, wonder and endless surprises as renowned magician Bill Blagg presents Family Magic! With 70 minutes of non-stop magical fun, Family Magic is specifically designed to entertain and engage audiences of all ages. Bill Blagg's unique blend of comedy, audience participation, and mind-bending magic will keep you on the edge of your seat eagerly anticipating what's coming next. Prepare to be amazed as ordinary objects come to life while others vanish in the blink of an eye and you could even be chosen to float in mid-air! Family Magic is a unique blend of interactive entertainment and awe-inspiring magic that guarantees an unforgettable adventure for all ages. Join us for this magical family event which is sure to create unforgettable memories with your loved ones!



If it gets too loud, I can cover my ears with my hands or ask for headphones.



I can ask for a break and go to the chill zone.
The chill zone is a quiet place away from the performance, where I can calm my body.



I can return to my seat in the theatre when I am ready.



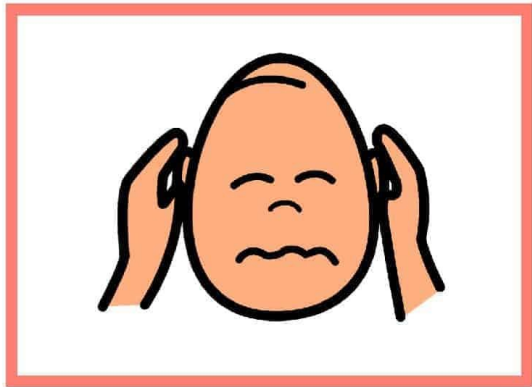
When the performance is all done, everybody stands up and claps.



**Going to the
Providence Performing Art Center
is so much fun!**



It is too loud.



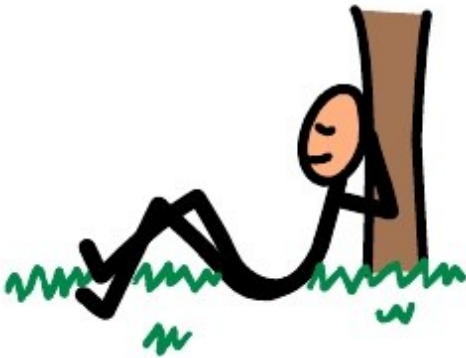
I can cover my ears with my hands.



I can wear earplugs or headphones
if the noise gets too loud.

I need a break.

BREAK TIME



BREAK TIME

