

## Social Narrative

For the Sensory-Friendly Performance of  
**Dr. Seuss' How The Grinch Stole Christmas! The Musical**  
**Saturday, December 21st @ 11 AM**

*\*Thank you to our partners at The Autism Project*



Special thanks to TDF's National Autism-Friendly Performance Training Program for serving as an advisor, [www.tdf.org/autism](http://www.tdf.org/autism). This program has been made possible, in part, through a grant from NEXT for AUTISM from the proceeds of Night of Too Many Stars.



I am going to see

**Dr. Seuss' How The Grinch Stole Christmas!**  
**The Musical**  
at the

**Providence Performing Arts Center**



When I arrive at the theatre, there might be a lot of people there to see the play. I may have to wait in line. This is okay, I can stay with my group as we enter the building.



We may have to stop by the box office to pick up or purchase our tickets.





When I get to Providence Performing Arts Center, I will walk through the metal detectors where there are security guards. They keep everyone safe.



Everyone has a ticket for the show. An usher will scan my ticket,



and show me where to sit.



When it is time for the play to begin, the lights are turned down and everyone in theatre becomes quiet.



Going to a play is like watching a movie or TV except the people, or actors are real and in front of us, live on a big stage.





Dr. Seuss' How the Grinch Stole Christmas! The Musical is a musical play about a grumpy Grinch. He sometimes may look mad and scary, but that is all part of the performance. He is only pretending to be angry. This is called acting.



The music is created by musicians, who play the music. They are in front of the stage, down below in an orchestra pit.



If it gets too loud, I can cover my ears with my hands or ask for headphones.



I can ask for a break and go to the chill zone.

The chill zone is a quiet place away from the performance, where I can calm my body.





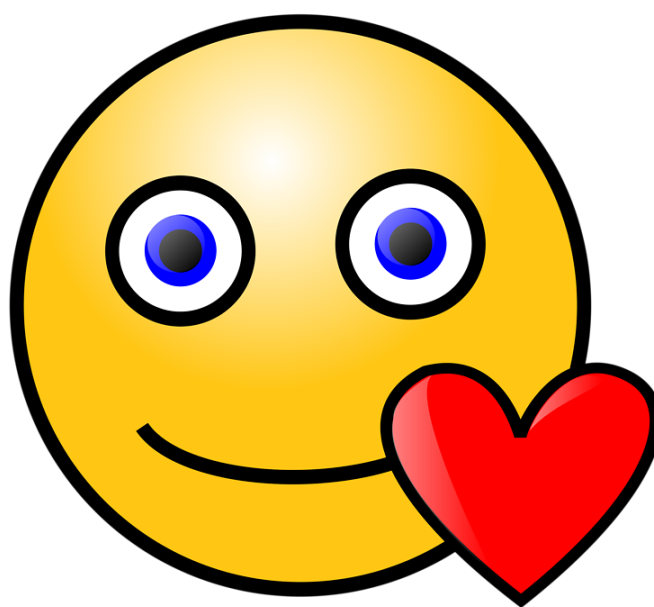
I can return to my seat in the theatre when I am ready.



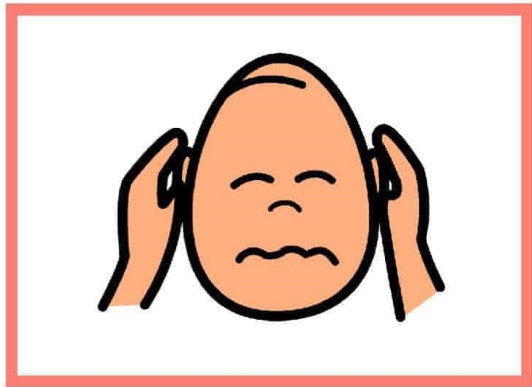
When the performance is all done, everybody stands up and claps.



**Going to  
Providence Performing Art Center  
is so much fun!**



## It is too loud



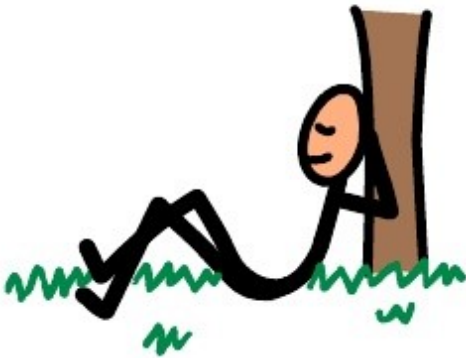
I can cover my ears with my hands.



I can wear earplugs or headphones  
if the noise gets too loud.

## I need a break

BREAK TIME



BREAK TIME

